

2.1.1

Landing

Automatic model: Mechanism

Category

CPP



Lock beak-plate assembly

40/10 MODEL

4000.RD000

Right opening.

4000.RI000

Left opening.

4000.RC400

Left opening & C4H CO: $\leq 915\text{mm}$.

4000.RD400

Right opening 4 panels CO: $\leq 915\text{mm}$.

4D00.RD000

Right opening.
DIN 18.091.

4D00.RI000

Left opening.
DIN 18.091.

4D00.RC400

Left opening & C4H CO: $\leq 915\text{mm}$.
DIN 18.091.

4D00.RD400

Right opening 4 panels CO: $\leq 915\text{mm}$.
DIN 18.091.

40IP.RD000

Right opening.
IP-54.

40IP.RI000

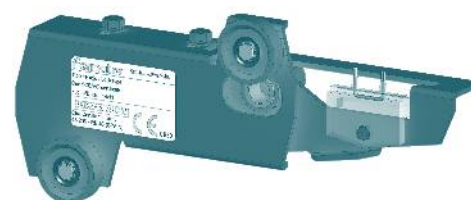
Left opening.
IP-54.

40IP.RC400

Left opening & C4H CO: $\leq 915\text{mm}$.
IP-54.

40IP.RD400

Right opening 4 panels CO: $\leq 915\text{mm}$.
IP-54.



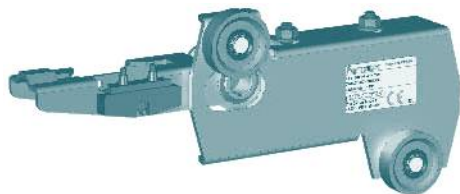
* Attention: For central opening operators with double locking device, choose "telescopic right opening" or "telescopic left opening" according to the assembly hand needed.

... it follows on page 92 →

CPP

Category

Lock beak-plate assembly



50/11 MODEL

5000.RD000

Right opening.

5000.RI000

Left opening.

5000.RC400

Left opening & C4H CO: $\leq 915\text{mm}$.

5000.RD400

Right opening 4 panels CO: $\leq 915\text{mm}$.

5D00.RD000

Right opening.
DIN 18.091.

5D00.RI000

Left opening.
DIN 18.091.

5D00.RC400

Left opening & C4H CO: $\leq 915\text{mm}$.
DIN 18.091.

5D00.RD400

Right opening 4 panels CO: $\leq 915\text{mm}$.
DIN 18.091.

50IP.RD000

Right opening.
IP-54.

50IP.RI000

Left opening.
IP-54.

50IP.RC400

Left opening & C4H CO: $\leq 915\text{mm}$.
IP-54.

50IP.RD400

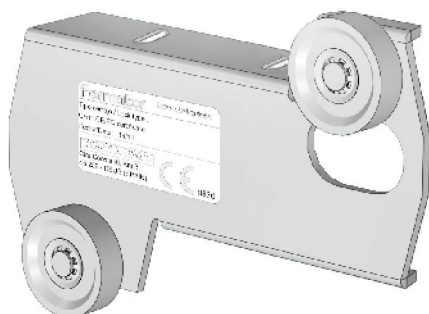
Right opening 4 panels CO: $\leq 915\text{mm}$.
IP-54.

* Attention: For central opening operators with double locking device, choose "telescopic right opening" or "telescopic left opening" according to the assembly hand needed.

CPT

Category

Rollers holder plate assembly



0000.RD000

Right opening.

0000.RI000

Left opening.

0000.RC400

Left opening & C4H CO: $\leq 915\text{mm}$.

0000.RD400

Right opening 4 panels CO: $\leq 915\text{mm}$.

* Attention: For central opening operators with double locking device, choose "telescopic right opening" or "telescopic left opening" according to the assembly hand needed.



Lock beak assembly

4000.RD000

40/10 model.
Right opening.

4000.RI000

40/10 model.
Left opening.

40IP.RD000

40/10 model. Right opening.
IP-54.

40IP.RI000

40/10 model. Left opening.
IP-54.

5000.RD000

50/11 model.
Right opening.

5000.RI000

50/11 model.
Left opening.

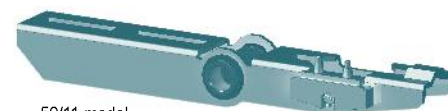
50IP.RD000

50/11 model. Right opening.
IP-54.

50IP.RI000

50/11 model. Left opening.
IP-54.


40/10 model.



50/11 model.

* Attention: For central opening operators with double locking device, choose "telescopic right opening" or "telescopic left opening" according to the assembly hand needed.



Lock beak support

4000.RC200

40/10 model.
C2H.

4000.R0000

40/10 model. Except for C2H, C4H, T1H, T3H y T4H,
included in other references of this price list.

4000.RD400

40/10 model.
Right opening T4H. CO: 600mm.

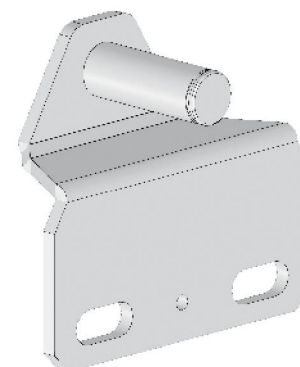
4000.RI400

40/10 model.
Left opening T4H & C4H. CO: 600mm.

40ES.RD300

40/10 model.
Right opening T3H & T4H. CO: 650mm.

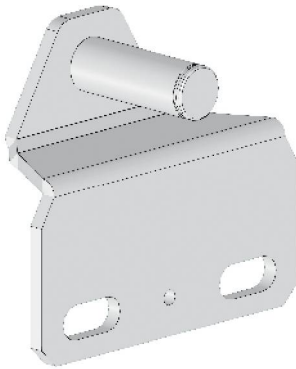
40ES.RI300

40/10 model. Left opening T3H & T4H CO: 650.
C4H CO: 650-915mm.


PSP

Category

Lock beak support



4000.RT100

40/10 model.
T1H.

5000.RC200

50/11 model.
C2H.

5000.R0000

50/11 model. Except for C2H, C4H, T1H, T3H & T4H,
included in others references of price list.

50ES.RD000

50/11 model.
Right opening T2H & T3H. CO: ≤ 900mm.

50ES.RI000

50/11 model.
Left opening T2H, T3H & C4H CO: ≤ 900mm.

CSC

Category

Lock contact support assembly



4000.RD000

40/10 model. Right opening.

4000.RI000

40/10 model. Left opening.

40DE.RC000

40/10 model.
Central opening double lock.

5000.RD000

50/11 model. Right opening.

5000.RI000

50/11 model. Left opening.

50DE.RC000

50/11 model.
Central opening double lock.

40IP.RD000

40/10 model. Right opening.
IP-54.

40IP.RI000

40/10 model. Left opening.
IP-54.

40DI.RC000

40/10 model.
Central opening double lock. IP-54.

50IP.RD000

50/11 model. Right opening.
IP-54.

50IP.RI000

50/11 model. Left opening.
IP-54.

50DI.RC000

50/11 model.
Central opening double lock. IP-54

* Attention: For central opening operators with double locking device, choose "telescopic right opening" or "telescopic left opening" according to the assembly hand needed.



Electrical contact assembly

6040.00000

Electrical contact assembly.
40/10 model. 60mm.

6050.00000

Electrical contact assembly.
50/11 model. 60mm.

4000.00000

Electrical contact assembly.
40mm.

5000.00000

Electrical contact assembly.
50mm.

IP54.00000

Electrical contact assembly.
IP-54.

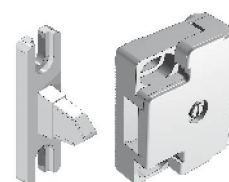
IP67.00000

Electrical contact assembly.
IP-67.

60mm. electrical contact.



50mm. electrical contact.



40mm. electrical contact.



Roller

0100.00000

Concentric upper. 40/10 model. PFR-01.
Ø 48mm.

0500.00000

Concentric upper. 50/11 model. PFR-05.
Ø 56mm.

0400.00000

Reinforced eccentric lower 40/10 model. PFR-04.
Ø 30mm.

1500.00000

Eccentric lower 40/10 model. PFR-15.
Ø 30mm.

0600.00000

Eccentric lower 50/11 model. PFR-06.
Ø 54mm.

0800.00000

Sync. 40/10 model. PFR-08.
Ø 47mm.

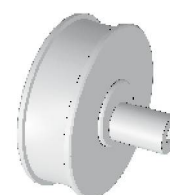
0700.00000

Sync. 50/11 model. PFR-07.
Ø 64mm.

30mm. eccentric roller.



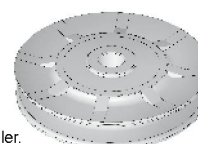
50/11 eccentric roller.



40/10 concentric roller.



Sync roller.



Safety spring

0000.R0000
0354

Safety spring.
Length = 354mm.

0000.R0000
0374

Safety spring.
Length = 374mm.

0000.R0000
0392

Safety spring.
Length = 392mm.

0000.R0000
0424

Safety spring.
Length = 424mm.

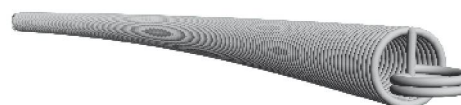
0000.R0000
0442

Safety spring.
Length = 442mm.

0000.R0000
0474

Safety spring.
Length = 474mm.

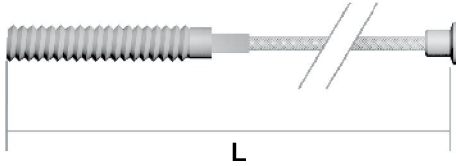

Attention: For associate spring length with CO & door model see Annexe 5.



PCA

Category

Synchronisation cable



0000.

See Annexe 2

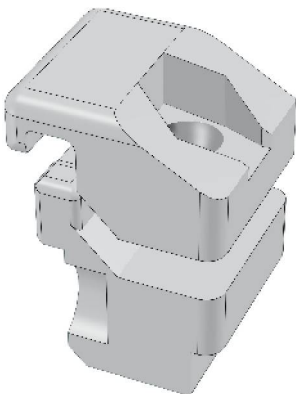
Sync cable.

⚠ Attention: To complete this code, see Annexe 2 (Sync cable length).
The related price is valid one linear metre.

CAM

Category

Cable fastener assembly



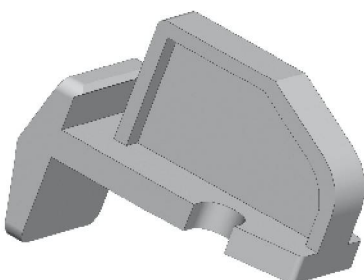
AL00.00000

Aluminium cable fastener assembly.

DSR

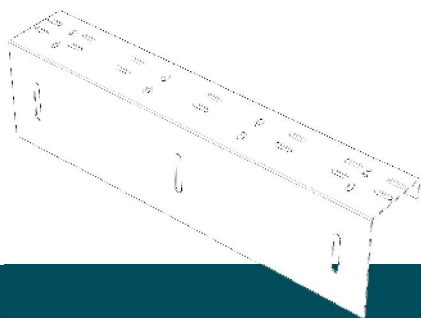
Category

Safety spring fastening support



0000.R0000

Safety spring fastening support.



2.1.2

Landing

Automatic model: Frame



Sill support console

Category

PCF

0050.R0000

See Annexe 1

Width: 50mm.

0080.R0000

See Annexe 1

Width: 80mm.

0013.R0000

See Annexe 1

Width: 130mm.

0017.R0000

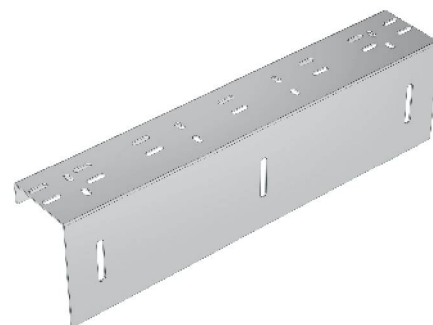
See Annexe 1

Width: 175mm.

0019.R0000

See Annexe 1

Width: 190mm.



Attention: To complete this code, see Annexe 1 (Clear Opening).
The related price is valid for CO: 800mm.

Category

PFA



Toe guard

0000.R00FG

See Annexe 1

Standard model.
Galvanized steel.

0000.R00XN

See Annexe 1

Standard model.
Stainless steel.

A600.R00FG

See Annexe 1

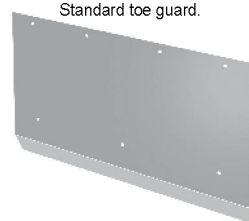
A-60 model.
Galvanized steel.

A600.R00XN

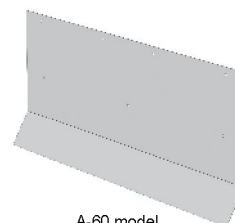
See Annexe 1

A-60 model.
Stainless steel.

Standard toe guard.



A-60 model.

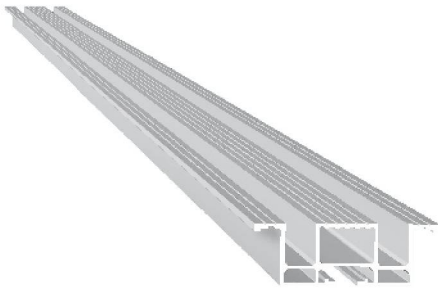


Attention: To complete this code, see Annexe 1 (Clear Opening).
The related price is valid for CO: 800mm.

PPS

Category

Sill



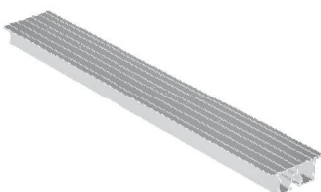
54AE.RC2	See Annexe 3	See Annexe 1	C2H. Width: 54mm.
75AE.RC4	See Annexe 3	See Annexe 1	C4H. Width: 75mm.
90AE.RC4	See Annexe 3	See Annexe 1	C4H. Width: 90mm. (40 + 40).
13AE.RC6	See Annexe 3	See Annexe 1	C6H. Width: 135mm.
18AE.RC8	See Annexe 3	See Annexe 1	C8H. Width: 180mm.
54AE.RT1	See Annexe 3	See Annexe 1	T1H. Width: 54mm.
75AE.RT2	See Annexe 3	See Annexe 1	T2H. Width: 75mm.
90AE.RT2	See Annexe 3	See Annexe 1	T2H. AnchoWidth:
13AE.RT3	See Annexe 3	See Annexe 1	T3H. Width: 135mm.
18AE.RT4	See Annexe 3	See Annexe 1	T4H. Width: 180mm.

! Attention: To complete this code, see Annexe 1 (Clear Opening) and Annexe 3 (Sill material).
The related price is valid for Aluminium sill CO: 800mm.

PSS

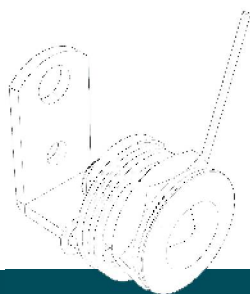
Category

Sill supplement



6000.R00	See Annexe 3	See Annexe 1	Width: 60mm.
7000.R00	See Annexe 3	See Annexe 1	Width: 70mm.

! Attention: To complete this code, see Annexe 1 (Clear Opening) and Annexe 3 (Sill material).
The related price is valid for Aluminium sill CO: 800mm.



2.1.3

Landing

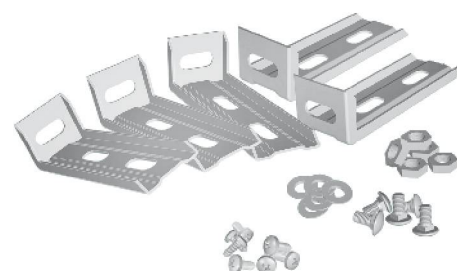
Automatic model: Accessories

Category

AES



Frame fastening bracket set



A005.R0000

"A" type brackets (5 units).

D005.R0000

"D" type brackets (5 units).

E005.R0000

"E" type brackets (5 units).

F005.R0000

"F" type brackets (5 units).

G005.R0000

"G" type brackets (5 units).

H005.R0000

"H" type brackets (5 units).

Q005.R0000

"Q" type brackets (5 units).

R005.R0000

"R" type brackets (5 units).

S005.R0000

"S" type brackets (5 units).

U005.R0000

"U" type brackets (5 units).

V205.R0000

"V2" type brackets (5 units).

V705.R0000

"V7" type brackets (5 units).

V805.R0000

"V8" type brackets (5 units).

CR00.R0000

Reinforced mechanism brackets (2 units).

N000.R0000

"N" type brackets (2 units "F" model;
2 units "G" model & 2 units "M" model).

O000.R0000

"O" type brackets (2 units "M" model;
2 units "H" model & 2 units "E" model).

K000.R0000

"Klefer" type brackets (5 units).

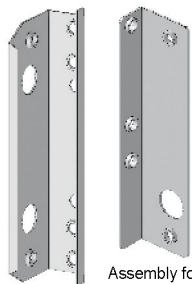
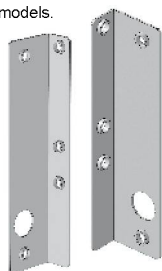
ASF

Category

Jamb fixing support accessory set



Assembly for central models.



Assembly for telescopic models.



0000.RC000

Jamb fixing support accessory set.
Central opening.

0000.RD000

Jamb fixing support accessory set.
Right telescopic opening.

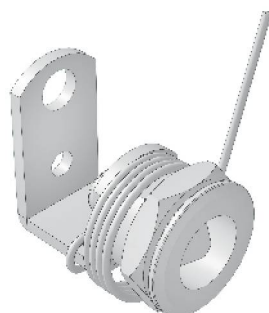
0000.RI000

Jamb fixing support accessory set.
Left telescopic opening.

ACJ

Category

Release lock accessory assembly



0000.RD000

Right opening telescopic & C2H.

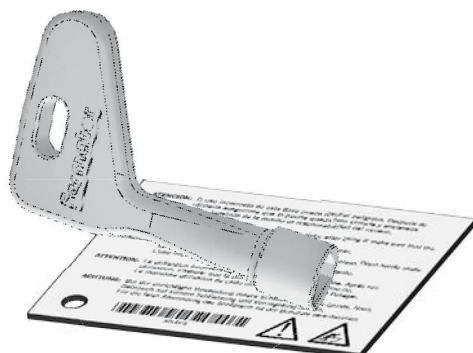
0000.RI000

Left opening telescopic & C4H-C6H-C8H.

ADS

Category

Triangular key accessory set



0000.R0000

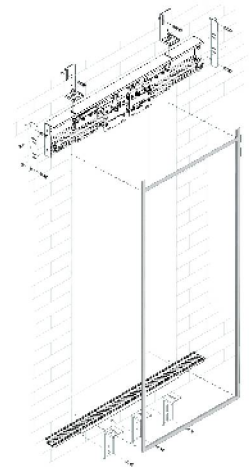
Triangular key accessory set.



Modernisation installing tool

MD00.R0000 **2000** See Annexe 1 Modernisation installing tool.

! Attention: To complete this code, see Annexe 1 (Clear Opening).
 The related price is valid for CO: 800mm.

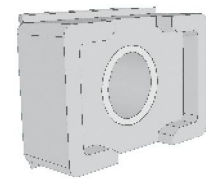


Rubber stop

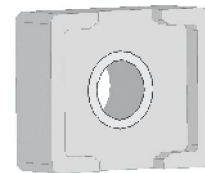
TP20.00000 20 X 30mm. stop.

TP25.00000 25 X 30mm. stop.

TR00.00000 Round stop.



20 X 30mm. stop.



25 X 30mm. stop.

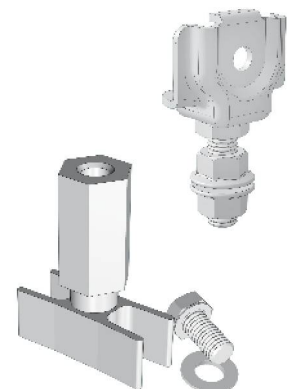


Round stop.



Panel accessories set

0000.R0000 Panel regulation support & panel guide shoe set (2 units).



ASH

Category

Panel regulator support accessories set

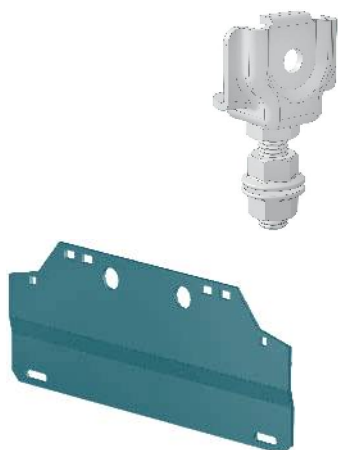


5R05.00000

Panel regulator support accessories set
for full glass panel except C4H (2 units).

5R06.0C400

Panel regulator support accessories set
for full glass panel C4H (2 units).



AGH

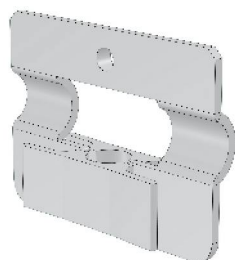
Category

Panel guide shoe accessories set



0006.00000

Panel guide shoe accessories set
for full glass panels (2 units).



APT

Category

Pulling roller accessories set

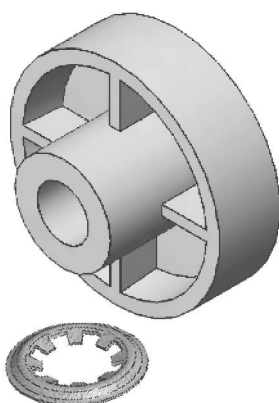


0000.R0000

Pulling rollers accessories set.
Except C4H \leq 915mm.

00ES.RC400

Pulling rollers accessories set.
For C4H \leq 915mm.





Top-track

C2H

40 See Annexe 4 **.RC2ZN** See Annexe 1 40/10 model.

50 See Annexe 4 **.RC2ZN** See Annexe 1 50/11 model.

400R.RC2ZN See Annexe 1 Reinforced 40/10 model.

500R.RC2ZN See Annexe 1 Reinforced 50/11 model.

C4H

40 See Annexe 4 **.RC4ZN** See Annexe 1 40/10 model.

50 See Annexe 4 **.RC4ZN** See Annexe 1 50/11 model.

40RR.RC4ZN See Annexe 1 Reinforced 40/10 model.

50RR.RC4ZN See Annexe 1 Reinforced 50/11 model.

C6H

40 See Annexe 4 **.RC6ZN** See Annexe 1 40/10 model.

50 See Annexe 4 **.RC6ZN** See Annexe 1 50/11 model.

40RR.RC6ZN See Annexe 1 Reinforced 40/10 model.

50RR.RC6ZN See Annexe 1 Reinforced 50/11 model.

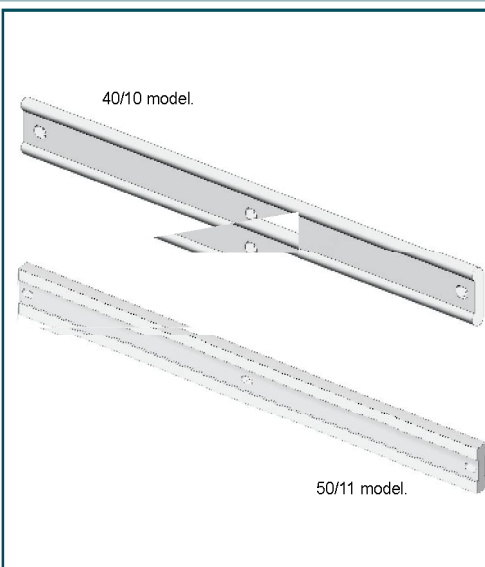
C8H

40 See Annexe 4 **.RC8ZN** See Annexe 1 40/10 model.

50 See Annexe 4 **.RC8ZN** See Annexe 1 50/11 model.

40SR.RC8ZN See Annexe 1 Reinforced 40/10 model.

50SR.RC8ZN See Annexe 1 Reinforced 50/11 model.



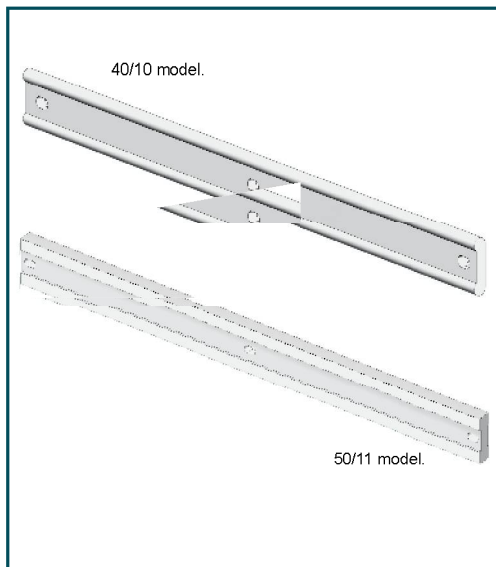
Attention: To complete this code, see Annexe 1 (Clear Opening) and Annexe 4 (Top-track position).
The related price is valid for aluminium CO: 800mm.

... it follows on page 104. →

PCG

Category

Top-track



T1H

40	See Annexe 4	.RT1ZN	See Annexe 1	40/10 model.
50	See Annexe 4	.RT1ZN	See Annexe 1	50/11 model.
400R.RT1ZN		See Annexe 1	Reinforced 40/10 model.	
500R.RT1ZN		See Annexe 1	Reinforced 50/11 model.	

T2H

40	See Annexe 4	.RT2ZN	See Annexe 1	40/10 model.
50	See Annexe 4	.RT2ZN	See Annexe 1	50/11 model.
40RR.RT2ZN		See Annexe 1	Reinforced 40/10 model.	
50RR.RT2ZN		See Annexe 1	Reinforced 50/11 model.	

T3H

40	See Annexe 4	.RT3ZN	See Annexe 1	40/10 model.
50	See Annexe 4	.RT3ZN	See Annexe 1	50/11 model.
40RR.RT3ZN		See Annexe 1	Reinforced 40/10 model.	
50RR.RT3ZN		See Annexe 1	Reinforced 50/11 model.	

T4H

40	See Annexe 4	.RT4ZN	See Annexe 1	40/10 model.
50	See Annexe 4	.RT4ZN	See Annexe 1	50/11 model.
40SR.RT4ZN		See Annexe 1	Reinforced 40/10 model.	
50SR.RT4ZN		See Annexe 1	Reinforced 50/11 model.	



Attention: To complete this code, see Annexe 1 (Clear Opening) and Annexe 4 (Top-track position).
The related price is valid for aluminium CO: 800mm.



Header

C2H

0000.RC2	See Annexe 6	See Annexe 1	Header without indicator.
-----------------	--------------	--------------	---------------------------

00CS.RC2	See Annexe 6	See Annexe 1	Header with indicator.
-----------------	--------------	--------------	------------------------

C4H

0000.RC4	See Annexe 6	See Annexe 1	Header without indicator.
-----------------	--------------	--------------	---------------------------

00CS.RC4	See Annexe 6	See Annexe 1	Header with indicator.
-----------------	--------------	--------------	------------------------

C6H

0000.RC6	See Annexe 6	See Annexe 1	Header without indicator.
-----------------	--------------	--------------	---------------------------

00CS.RC6	See Annexe 6	See Annexe 1	Header with indicator.
-----------------	--------------	--------------	------------------------

C8H

0000.RC8	See Annexe 6	See Annexe 1	Header without indicator.
-----------------	--------------	--------------	---------------------------

00CS.RC8	See Annexe 6	See Annexe 1	Header with indicator.
-----------------	--------------	--------------	------------------------

T1H

0000.RT1	See Annexe 6	See Annexe 1	Header without indicator. PL ≤ 915mm.
-----------------	--------------	--------------	--

00CS.RT1	See Annexe 6	See Annexe 1	Header with indicator. PL ≤ 915mm.
-----------------	--------------	--------------	---------------------------------------

0000.RD1	See Annexe 6	See Annexe 1	Header without indicator. PL > 915mm. Right opening.
-----------------	--------------	--------------	---

00CS.RD1	See Annexe 6	See Annexe 1	Header with indicator. PL > 915mm. Right opening.
-----------------	--------------	--------------	--

0000.RI1	See Annexe 6	See Annexe 1	Header without indicator. PL > 915mm. Left opening.
-----------------	--------------	--------------	--

00CS.RI1	See Annexe 6	See Annexe 1	Header with indicator. PL > 915mm. Left opening.
-----------------	--------------	--------------	---

T2H

0000.RT2	See Annexe 6	See Annexe 1	Header without indicator. PL ≤ 915mm.
-----------------	--------------	--------------	--

00CS.RT2	See Annexe 6	See Annexe 1	Header with indicator. PL ≤ 915mm.
-----------------	--------------	--------------	---------------------------------------

0000.RD2	See Annexe 6	See Annexe 1	Header without indicator. PL > 915mm. Right opening.
-----------------	--------------	--------------	---

00CS.RD2	See Annexe 6	See Annexe 1	Header with indicator. PL > 915mm. Right opening.
-----------------	--------------	--------------	--

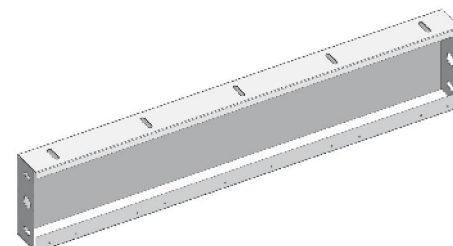
0000.RI2	See Annexe 6	See Annexe 1	Header without indicator. PL > 915mm. Left opening.
-----------------	--------------	--------------	--

00CS.RI2	See Annexe 6	See Annexe 1	Header with indicator. PL > 915mm. Left opening.
-----------------	--------------	--------------	---



Attention: To complete this code, see Annexe 1 (Clear Opening) and Annexe 6 (Finishes).
The related price is valid for epoxy CO: 800mm.

For a headers with indicator attach hole position drawing.

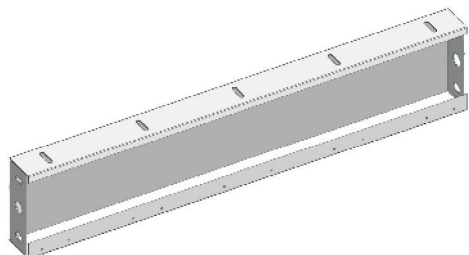


... it follows on page 106. →

PDI

Category

Header



T3H

0000.RT3	See Annexe 6	See Annexe 1	Header without indication. PL ≤ 915mm.
00CS.RT3	See Annexe 6	See Annexe 1	Header with indication. PL ≤ 915mm.
0000.RD3	See Annexe 6	See Annexe 1	Header without indication. PL > 915mm. Right opening.
00CS.RD3	See Annexe 6	See Annexe 1	Header with indication. PL > 915mm. Right opening.
0000.RI3	See Annexe 6	See Annexe 1	Header without indication. PL > 915mm. Left opening.
00CS.RI3	See Annexe 6	See Annexe 1	Header with indication. PL > 915mm. Left opening.

T4H

0000.RT4	See Annexe 6	See Annexe 1	Header without indication. PL ≤ 915mm.
00CS.RT4	See Annexe 6	See Annexe 1	Header with indication. PL ≤ 915mm.
0000.RD4	See Annexe 6	See Annexe 1	Header without indication. PL > 915mm. Right opening.
00CS.RD4	See Annexe 6	See Annexe 1	Header with indication. PL > 915mm. Right opening.
0000.RI4	See Annexe 6	See Annexe 1	Header without indication. PL > 915mm. Left opening.
00CS.RI4	See Annexe 6	See Annexe 1	Header with indication. PL > 915mm. Left opening.



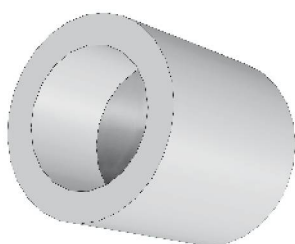
Attention: To complete this code, see Annexe 1 (Clear Opening) and Annexe 6 (Finishes).
The related price is valid for epoxy CO: 800mm.

For a headers with indicator attach hole position drawing.

DST

Category

Lock beak rubber stop

**00TP.R0000**

Lock beak rubber stop.
M-6.



Lightcover with release lock

C4H

00	See Annexe 9	.RC4	See Annexe 6	See Annexe 1	Standard model.
-----------	--------------	-------------	--------------	--------------	-----------------

AR	See Annexe 9	.RC4	See Annexe 6	See Annexe 1	Refurbishment model.
-----------	--------------	-------------	--------------	--------------	----------------------

C6H

00	See Annexe 9	.RC6	See Annexe 6	See Annexe 1	Standard model.
-----------	--------------	-------------	--------------	--------------	-----------------

AR	See Annexe 9	.RC6	See Annexe 6	See Annexe 1	Refurbishment model.
-----------	--------------	-------------	--------------	--------------	----------------------

C8H

00	See Annexe 9	.RC8	See Annexe 6	See Annexe 1	Standard model.
-----------	--------------	-------------	--------------	--------------	-----------------

AR	See Annexe 9	.RC8	See Annexe 6	See Annexe 1	Refurbishment model.
-----------	--------------	-------------	--------------	--------------	----------------------

T2H

00	See Annexe 9	.RD2	See Annexe 6	See Annexe 1	Standard model. Right opening.
-----------	--------------	-------------	--------------	--------------	-----------------------------------

AR	See Annexe 9	.RD2	See Annexe 6	See Annexe 1	Refurbishment model. Right opening.
-----------	--------------	-------------	--------------	--------------	--

00	See Annexe 9	.RI2	See Annexe 6	See Annexe 1	Standard model. Left opening.
-----------	--------------	-------------	--------------	--------------	----------------------------------

AR	Ver Anexo 9	.RI2	See Annexe 6	See Annexe 1	Refurbishment model. Left opening.
-----------	-------------	-------------	--------------	--------------	---------------------------------------

T3H

00	See Annexe 9	.RD3	See Annexe 6	See Annexe 1	Standard model. Right opening.
-----------	--------------	-------------	--------------	--------------	-----------------------------------

AR	See Annexe 9	.RD3	See Annexe 6	See Annexe 1	Refurbishment model. Right opening.
-----------	--------------	-------------	--------------	--------------	--

00	See Annexe 9	.RI3	See Annexe 6	See Annexe 1	Standard model. Left opening.
-----------	--------------	-------------	--------------	--------------	----------------------------------

AR	See Annexe 9	.RI3	See Annexe 6	See Annexe 1	Refurbishment model. Left opening.
-----------	--------------	-------------	--------------	--------------	---------------------------------------

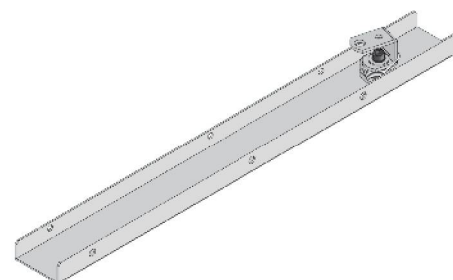
T4H

00	See Annexe 9	.RD4	See Annexe 6	See Annexe 1	Standard model. Right opening.
-----------	--------------	-------------	--------------	--------------	-----------------------------------

AR	See Annexe 9	.RD4	See Annexe 6	See Annexe 1	Refurbishment model. Right opening.
-----------	--------------	-------------	--------------	--------------	--

00	See Annexe 9	.RI4	See Annexe 6	See Annexe 1	Standard model. Left opening.
-----------	--------------	-------------	--------------	--------------	----------------------------------

AR	See Annexe 9	.RI4	See Annexe 6	See Annexe 1	Refurbishment model. Left opening.
-----------	--------------	-------------	--------------	--------------	---------------------------------------

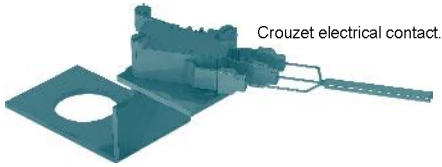


Attention: To complete this code, see Annexe 1 (Clear Opening), Annexe 6 (Finishes) and Annexe 8 (Contact model). The related price is valid for epoxy CO: 800mm. without contact.

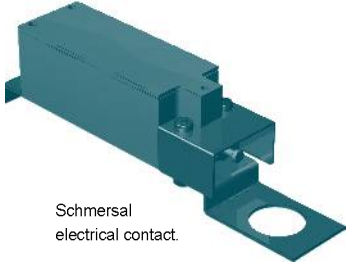
CCE

Category

Electrical contact support assembly



Crouzet electrical contact.



Schmersal electrical contact.

MF00.RD000

Crouzet electrical contact.
Right hand.

MF00.RI000

Crouzet electrical contact.
Left hand.

SM00.R0000

Schmersal electrical contact.

PR00.R0000

Prudhomme electrical contact.

GFH

Category

Glass



GMHD.R0000

X dimension

Y dimension

Laminated Glass. Big vision.
Right opening panel.

GMHI.R0000

X dimension

Y dimension

Laminated Glass. Big vision.
Left opening panel.

X dimension code: CO / number of panels + 20
Y dimension code: CH - 120

Attention: If the value is 3 figures, it must be preceded by zeros to complete the code.